

uMngeni Ecological Infrastructure Partnership (UEIP) – UPDATE

Support to the Continuation of the Reconciliation Strategy of
the KwaZulu-Natal Coastal Metropolitan Area: Phase 2

Strategy Steering Committee – Meeting 11

2 February 2017

Pearl Gola

UEIP Co-ordinator

UEIP FOCUS

- Investment in ecological infrastructure to supplement built infrastructure in decision-making and policy development.



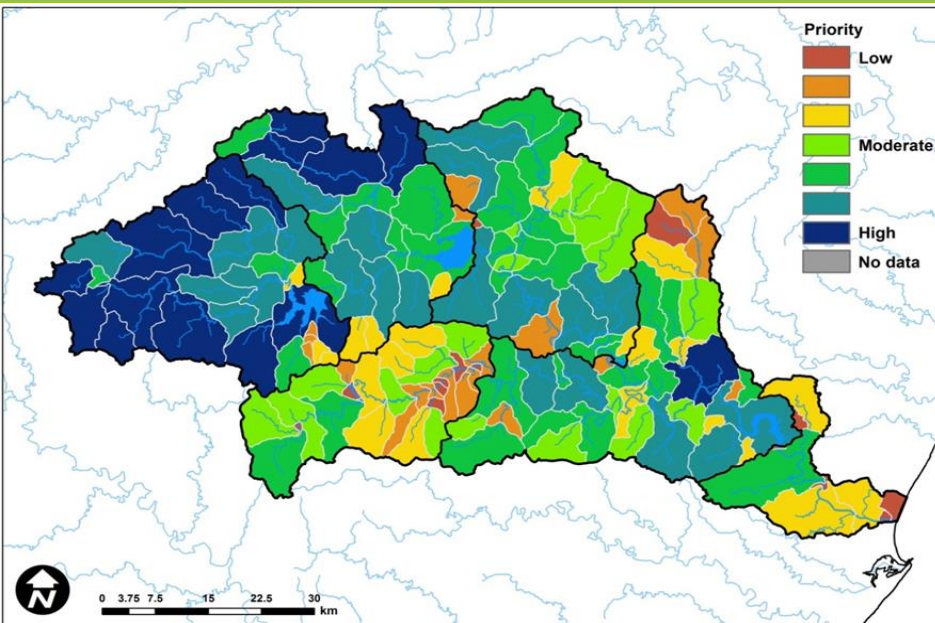
UEIP Objectives

- Strategic investments in ecological infrastructure that are contributing to enhanced water security in the uMngeni catchment
- Improved governance that is contributing to slowing the rate of degradation of ecological infrastructure and enhancing the sustainability of investments in ecological infrastructure
- Strengthened institutional capacity for the rehabilitation, maintenance and protection of ecological infrastructure

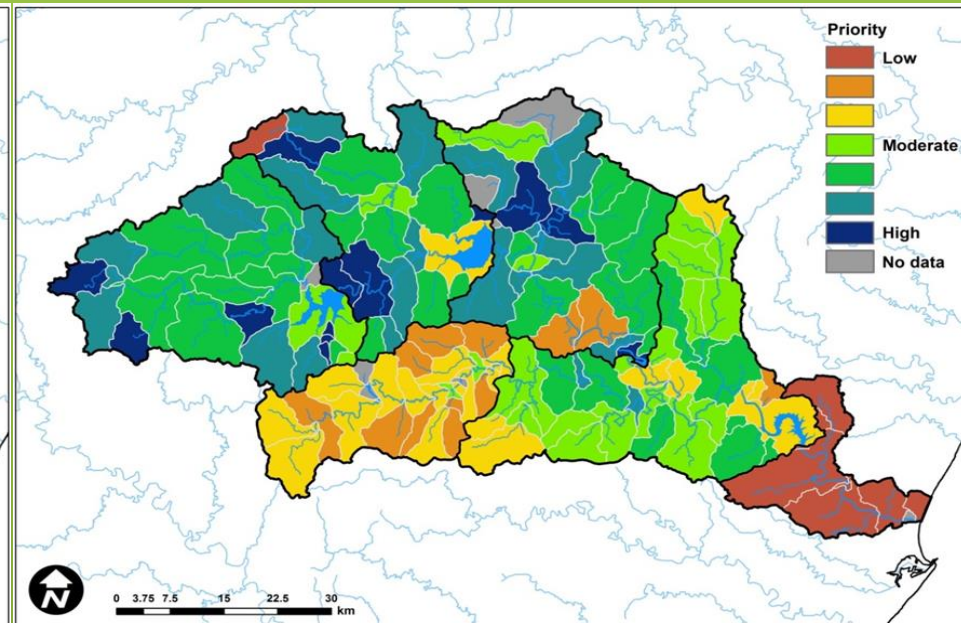
UEIP Objectives

- An enabling policy environment for investment in the rehabilitation and management of ecological infrastructure in the catchment
- An improved knowledge base on ecological infrastructure that informs policy and practice
- Effective collaboration, coordination and co-learning that enables the UEIP to consolidate, grow and demonstrate its value

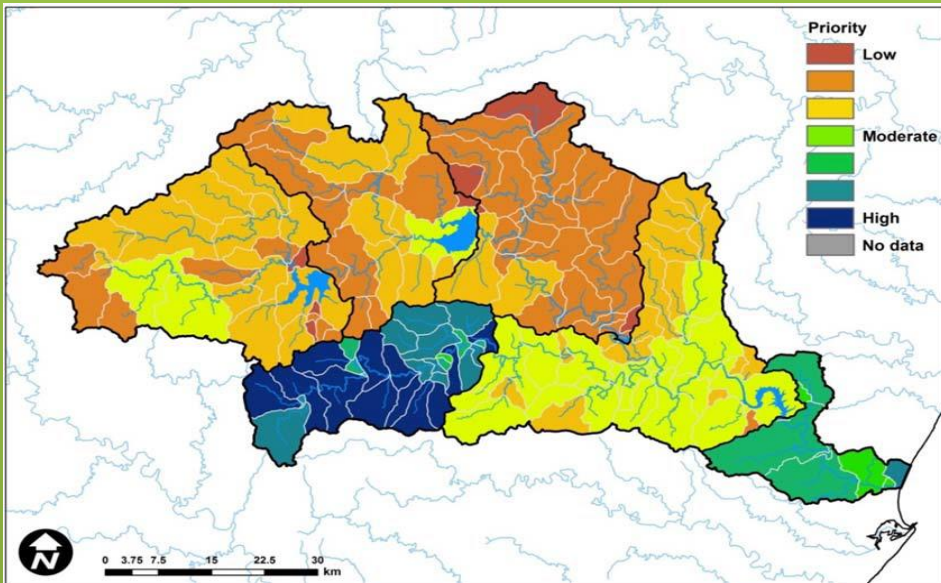
INVESTMENT PLAN



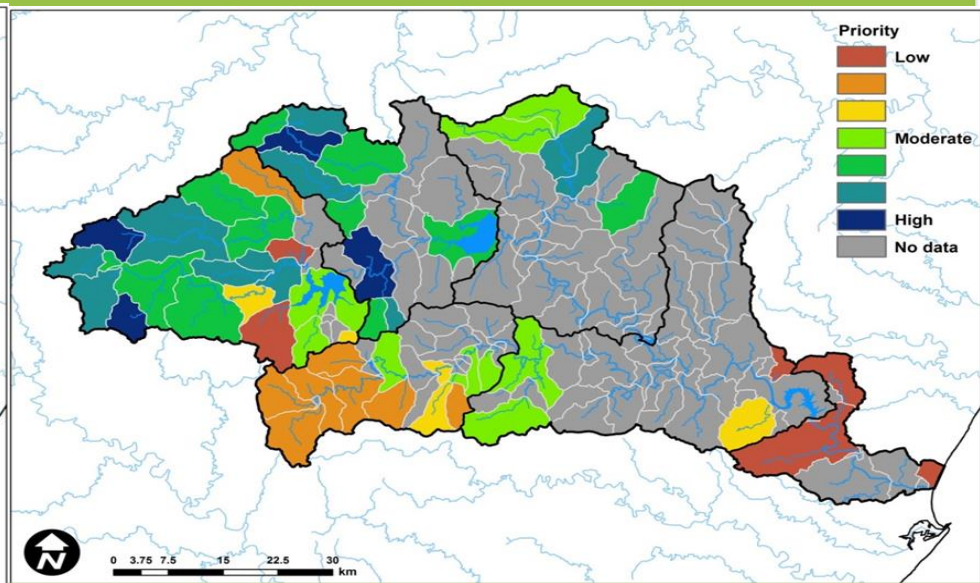
Priority catchments to **maintain natural vegetation** to maintain streamflow, dry season base-flow and sediment retention



Priority catchments to **rehabilitate degraded vegetation** to improve streamflow, dry season base-flow and sediment retention



Priority catchments **to enhance flood attenuation and reduce flood risk**

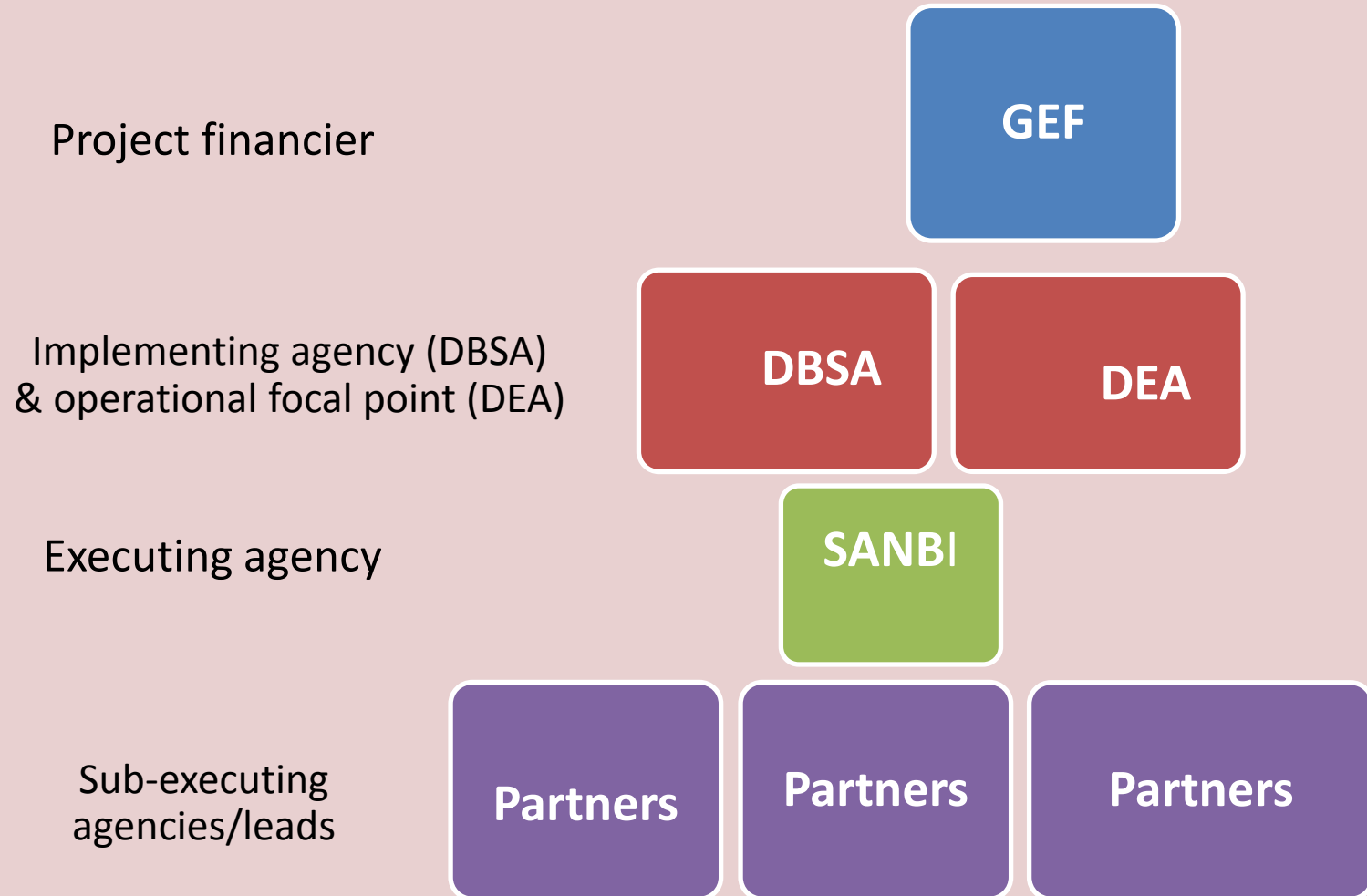


Priority catchments **to remove/rehabilitate wattle infestations** to improve streamflow, dry season base-flow and sediment retention

GLOBAL ENVIRONMENTAL FUND (GEF)

- Integrating biodiversity and ecosystem services into planning, finance and development in the water sector
- Timeframe
 - 5 years
 - 2017 – 2022

Project role-players



Component 1: Enabling

*1.1 Natural
capital
accounting*

*1.2 Policies &
institutions*

*1.3 Financial
mechanisms*

Component 2: Application

2.1 Berg-Breede

***2.2 Greater
uMngeni***

Component 3: Knowledge Management & Social Learning

*3.1 Social learning, credible evidence, and knowledge
management*

OUTCOME 2.2

Enhance organizational capacity and investment in ecological infrastructure in the Greater uMngeni catchment to improve water resource management

THANK YOU

